



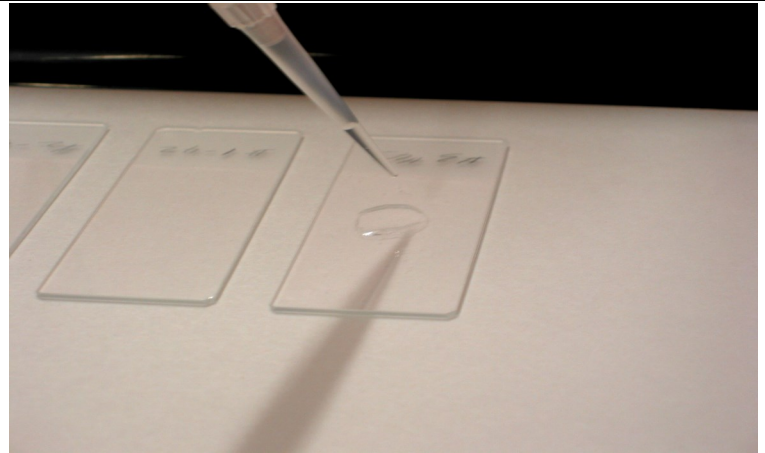
Liqui-PREP®

The Next Generation of Liquid Cytology

Technical Tips

Number: 00001

Date: 07/09/22



SUBJECT: Preservation of processed specimens for future analysis

TECHNICAL TIP OVERVIEW:

The following Technical Tip is for storing specimens after the original slides have been processed. A note of caution! Though the **Liqui-PREP®** System preserves specimens for future processing, it is recommended that specimens encapsulated in Liqui-PREP® Cellular Base Solution should not be stored. Using the “Working Tube” encapsulation method ensures a pool of harvested cells for storage.

TECHNICAL TIP: 00001

The following is a procedure for preserving the specimens after processing using the **Liqui-PREP®** System. As the **Liqui-PREP® Preservative Solution** is Molecular Biology friendly, this procedure can also be used for preparing specimens for additional molecular and non-molecular testing where the specimens are kept in a preserved cell pellet prior to the additional testing.

- After processing pipette ~5 ml of **Liqui-PREP® Preservative Solution** into the specimen centrifuge tube, cap the tube using Para Film or other capping device.
- Mix the specimen well using a Vortex for 15 seconds.

NOTE: Storage can be at ambient room temperature or at 2° to 8° C. We make no claim for storage time, though we have actual storage of 14 months with our in-house stock cell lines.

- 2° to 8° C: Prior to re-processing the specimen must be brought to room temperature for at least 1 hour.
- After the preserved specimen is at room temperature, vortex the specimen to mix the specimen.
- The specimen is now ready for further use.