



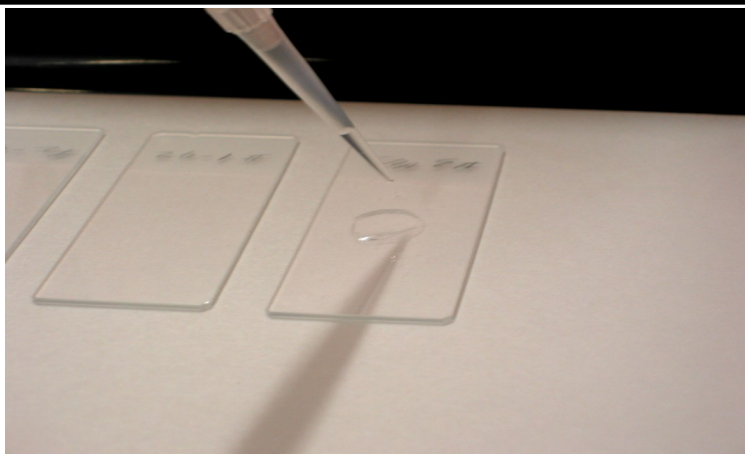
Liqui-PREP[®]

The Next Generation of Liquid Cytology

Technical Tips

Number: 00002

Date: 07/09/22



SUBJECT: Use of NON-DETACHABLE head collection devices

TECHNICAL TIP OVERVIEW:

The following Technical Tip is for those users of the **Liqui-PREP[®]** System that do not use detachable head collection devices such as the Rovers Cervex[®] Brush. The use of the Rovers Brush is easier, ensures more cellular specimens and is the most preferred method of cervical collection throughout the world, however, our experience has shown any device, used properly, will result in very good cellular harvesting.

TECHNICAL TIP: 00002

The following is a procedure for collection of cervical specimens using non-detachable head collection devices.

- After collecting the specimens using a non-detachable head collection device:
 - Stir the sampling device vigorously 10 to 15 times in the **Liqui-PREP[®] Collection Vial** containing preservative solution.
- OR
- Cut the non-detachable head collection device no more than 3.5 cm in length. Perform this cut over the mouth of the **Liqui-PREP[®] Collection Vial**.
- Place the lid on the vial, tighten the vial cap, write the patient's information on the vial label and send this collection vial to the laboratory for processing.

NOTE: More than one collection device may be used for collecting cervical specimens. Such as the *Rovers Cervex[®] Brush and the Rovers EndoCervical[®] Brush; Rovers Cervex[®] Brush and a bushy brush (cut to size of the collection vial); etc.*