



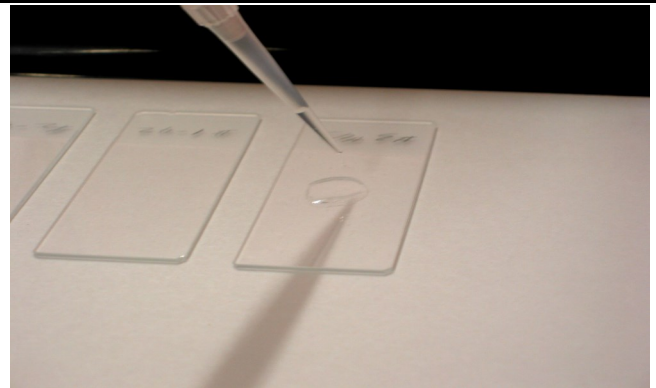
Liqui-PREP®

The Next Generation of Liquid Cytology

Technical Tips

Number: 00005

Date: 07/09/22



SUBJECT: Using Liqui-PREP® Harvested Cells with Digene Hybrid Capture II HPV

TECHNICAL TIP OVERVIEW:

The following Technical Tip is for users performing additional testing using the Digene Hybrid Capture II HPV DNA process with Liqui-PREP® harvested cells.

This application protocol has been developed and used successfully by Dr. Pierre Vassilakos, R.D. of the Institute de Patologie, Geneva, Switzerland.

TECHNICAL TIP: 00005

1. After preparation of the Liqui-PREP® cervical cytology, using the “Working Tube” encapsulation method, the specimen centrifuge tube will contain prime harvested cervical cells **Liqui-PREP® Preservative Solution**.
2. Add approximately 5 ml of **Liqui-PREP® Preservative Solution** to each centrifuge tube and mix using a vortex mixer.
3. Cap each tube and store for up to 2 weeks at 2 - 8° C. Longer storage times should be at -20° C (+/- 5° C).
4. Before starting Digene’s Hybrid Capture II HPV DNA assay, allow all required reagents and stored **Liqui-PREP®** cervical specimens to reach 20 - 25° C (Room Temperature).
5. Centrifuge the **Liqui-PREP®** samples at ~800 for ~10 minutes, decant supernatant and blot the tubes on clean absorbent paper.
6. Add 200µl of STM* to each cervical cell pellet and vortex for 15 seconds, using a vortex mixer, to re-suspend the pellet.
7. Add 100µl denaturation reagent and mix using a vortex for 5 seconds.
8. Prepare Digene Hybrid Capture II STM specimens/calibrators and controls according to the manufacturers instructions.
9. Incubate STM* specimens/calibrators, and controls in a 65° C (+/- 2° C) water bath for 45 minutes (+/- 5 minutes).
10. Incubate the **Liqui-PREP®** harvested cells (after addition of the STM* and denaturation reagent) for 90 minutes (+/- 5 minutes).
11. After denaturation arrange calibrators, controls, and clinical specimens in the proper order for Digene’s Hybrid Capture II assay.
12. The Hybrid Capture II assay requires 75µl of denatured clinical specimen.

* STM = Specimen Transport Medium, provided by Digene.

Any Questions, Contact your local Liqui-PREP® Representative :

LGM International, Inc.
Melbourne, FL 32934 USA
Telephone: (321) 254-0480; Fax: (321) 254-0481
Email: sales@lpalp.com