



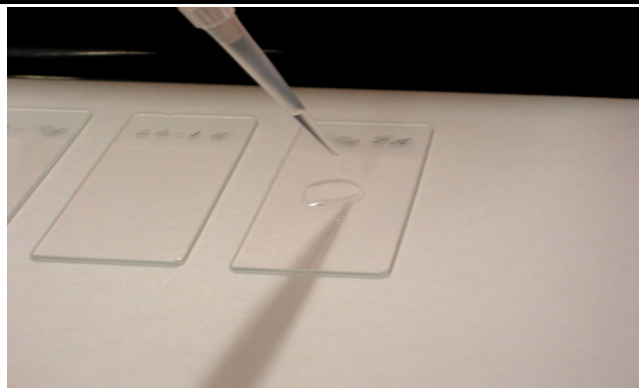
Liqui-PREP[®]

The Next Generation of Liquid Cytology

Technical Tips

Number: 00007

Date: 07/09/22



SUBJECT: Removing Excess Red Blood Cells from **Liqui-PREP[®]** Collected Specimens

TECHNICAL TIP OVERVIEW:

Generally, small to moderate amounts of red blood cells in a specimen have little to no effect on the quality of the **Liqui-PREP[®]** processed slides. We have found success removing red blood cells from moderately large bloody specimens using the following Technical Tip.

TECHNICAL TIP: 00007

Generally bloody specimens will be identified prior to processing by visual observation. Minimizing the specimen of red blood cells is best performed prior to processing the collected specimen.

- Pipette 4ml of **Liqui-PREP[®]** Lytic Reagent in to the specimen preservative vial.
- Mix well, using a vortex for 10 to 15 seconds.
- Pour the specimen into a 15ml centrifuge tube.
- Centrifuge the specimen for 10 minutes at 1000 g.
- Decant the supernatant.
- Add ~8ml of **Liqui-PREP[®]** Preservative solution to this specimen
- Mix well using a vortex for 10 to 15 seconds.

Processed the specimen according to the **Liqui-PREP[®]** package insert.