



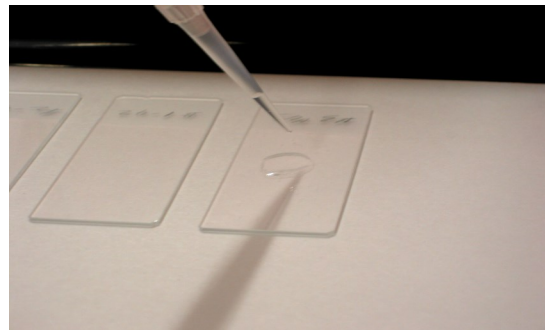
Liqui-PREP[®]

The Next Generation of Liquid Cytology

Technical Tips

Number: 00015

Date: 07/09/22



SUBJECT: Sputum and Bronchial Washing cytology preparations with Liqui-PREP[®]

TECHNICAL TIP OVERVIEW:

Sputum and Bronchial Washing specimen are considered to be a moderate volume with moderate cellular specimens. These specimens can be a difficult specimen to process because of the high concentration of respiratory mucous. The following are tips that can make processing these specimens easier.

Specimen Collection and Preservation Transport:

SPUTUM:

To avoid bacterial overgrowth, reduce cellular degradation and keep respiratory mucous hydrated, the specimen should be collected in **Liqui-PREP[®] Preservative Solution** and should be delivered to the laboratory as soon as possible after collection.

Upon delivery to the laboratory, the specimen should be:

- Mixed well and poured into 50 ml centrifuge tube/s.
- Centrifuged at ~1,000xg for ~10 minutes.
- Diluent decanted
- Pipette ~30ml of **Liqui-PREP[®] Preservative Solution**, then mixed well.
- Allow at least 2 hours before processing to preserve and fix the specimen.

BRONCHIAL WASHINGS:

These specimens are collected in a clinic situation, in lavage solution and are generally delivered to the laboratory immediately after collection. Upon delivery to the laboratory, the specimen should be:

- Mixed well and poured into 50 ml centrifuge tube/s.



Liqui-PREP[®]

The Next Generation of Liquid Cytology

Technical Tips

Number: 00015

SUBJECT: Sputum and Bronchial Washing cytology preparations with Liqui-PREP[®]

Processing Concentration: (Sputum or Bronchial Washing)

The specimen is now preserved in a 50ml centrifuge tube.

Manual:

- Centrifuge at ~1,000xg for ~10 minutes.
- Pour off the supernatant.
- Pipette ~4 ml of **Liqui-PREP[®] Cleaning Solution** into a 15ml centrifuge tube.
- Rinse the contents of the 50ml centrifuge tube into a 15ml centrifuge tube(above) using ~2ml aliquots of **Liqui-PREP[®] Preservative Solution** (mixing and rinsing). Total volumes 7ml
- Using a vortex, mix the specimens well.
- Centrifuge at ~1,000xg for ~10 minutes.

Encapsulation and Microscope slide production.

- Pipette 300µl to 500µl of **Liqui-PREP[®] Cellular Base Solution** into “Working Tubes”
- Decant the 15ml centrifuge tube.
- Mix the resulting cellular pellet well.
- Pipette 50µl of the well mixed cellular pellet and deliver it to the “Working Tube”
- Mix the “Working Tube well and Pipette 50µl of this sample onto a clean dry Microscope slide.
- Dry, Stain and Read.

Auto-LP[®]PRO:

- Centrifuge at ~1,000xg for ~10 minutes.
- Pour off the supernatant.
- Pipette ~4 ml of **Liqui-PREP[®] Cleaning Solution** into a 15ml centrifuge tube.
- Rinse the contents of the 50ml centrifuge tube into a 15ml centrifuge tube(above) using ~2ml aliquots of **Liqui-PREP[®] Preservative Solution** (mixing and rinsing). Total volumes 7ml
- Place the specimen centrifuge tube on the **Auto-LP[®] PRO** to process and produce specimen microscope slides.
- When the processing run is completed, Stain and Read.

Any Questions, Contact your local Liqui-PREP[®] Representative

LGM International, Inc.
Melbourne, FL 32934 USA
Telephone: (321) 254-0480; Fax: (321) 254-0481
Email: sales@lpaip.com